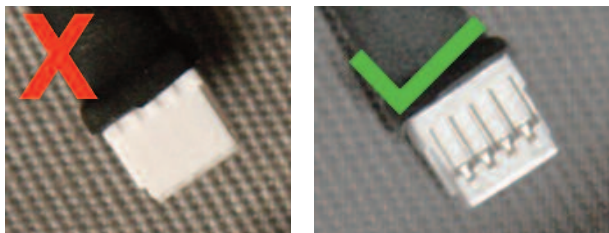


## OPERATING INSTRUCTIONS

### TO INSERT HEATERS INTO THE CONTROLLER

**IMPORTANT:** As the controller heater jacks are small, care must be taken when inserting the heaters into the jacks so as not to bend the pins. The two heater connection jacks located on the top of the controller.

- Hold the controller so that the gray button is facing you.
- Now, orient the heater power connector, as shown in the GREEN arrow image, so that it slides into the connector properly.



Operating the FireLite controller is very simple. The grey button is pressed to set the power percentage of the controller.

With no LEDs lit, the controller is OFF.



With the first LED lit, the power percentage is 20%.

Second LED lit is 40%.



Third LED lit is 60%.

Fourth LED lit is 80%.



All LEDs lit is 100%.

Amber LED lit indicates Low Voltage Cut-off. Your battery needs recharging.

